



## Techwave

Techwave established in 2004, is a global end-to-end IT services & solutions company, which develops long-term relationship with clients by leveraging unique delivery models and expert frameworks.

# HIGH-SPEED NETWORK PROVIDER

## About Client:

The client is a Western Oklahoma company providing fast and reliable Telecommunication services since 1936. They provide the latest technology and the necessary capacity with more than 5,000 miles of fiber spanning Oklahoma, Texas, and Arkansas. Over the next five years, they will provide internet service to more than 500,000 homes across Oklahoma, western Arkansas, and northwest Texas. A significant and ever-expanding high-speed fiber optic network has been constructed by the client.

Today, the client owns and operates a state-wide fiber optic network and provides voice and fiber optic solutions that help Oklahoma businesses grow and become more successful.

## Executive Overview:

The customer has specified the deliverables in KMZ design (Google Earth Pro) and Home pass Data first. The data used to design KMZ in the prescribed folder structure was unstable.

For all subsequent phases of this project, the data was more accurate and reliable. It was challenging to switch to the ArcGIS platform because of the lack of ArcGIS experience. We leveraged these issues into a chance to gain new abilities with our committed efforts and creative solutions. We were able to provide the client with effective ArcGIS design solutions because of our unmatched efforts and constant engagement.

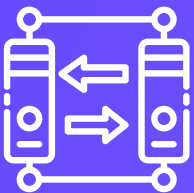


## Current Status:

Over the course of the last two years, we have consistently received various assignments. We effectively empowered our 15-member team to fulfill the client's goals and demands during our long-term collaboration. We are now organizing connections for more than 20000 home passes each with the help of our dedicated team members.

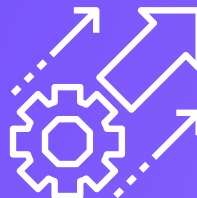
To provide the crew with the opportunity to work on various tasks, we have divided the project into various phases. This has made it easier for the project to function smoothly, which has helped us achieve the deadlines with higher-quality work. Each team member is now adequately qualified to complete any project assignment with quality. Our skill in field designing has been the cornerstone in helping us stay ahead of the curve during difficult times and ongoing change.

## Challenges and Opportunities:



### 1. Transmission to ArcGIS:

The schema was developed by the client with characteristics that adhere to their design guidelines. Prior to finding the right schema for their needs, the schema had to be modified for each new assignment. This proved to be a new realm of learning for Techwave. This has opened the doors of new opportunities for us.



### 3. Schema update:

The client's GIS schema was constantly updated to fit their needs. The attributes of the features are essential to the design's excellence. We have thus made an attempt to introduce a few automatic tools that would enhance the accuracy of attribution and minimize manual labor.



### 2. Pole Data Organization:

For easier access and evaluation, the client required the permitted pole data in an organized manner. Maintaining and Accessing various stages of Permitted pole data in GIS was a challenge for the client as this task was manual. Techwave has created an automated program that would, with a single click in accordance with instructions, populate the Pole's Permit data along with other statuses and publish it in the GIS shapefile for immediate access.



## Techwave's Strategy & Solutions:

Techwave team created solutions specially crafted to suit their specific requirements:



### Consistent Up-Skilling:

With prompt reviews and feedback from the clients, we have gained a comprehensive grasp of their motivations for switching from GIS to ArcGIS. The team has received thorough training in FTTP Planning and Design and is now capable of working on the ArcGIS platform. We strive to learn new things and venture into unexplored territories to stay ahead and deliver turnkey designs.



### Tool Development:

Our team has developed a tool to overcome the internal challenges caused due to inaccurate data scripts. Our tool has proven to run the scripts and have them verified with diligent quality checks for the ArcGIS platform.

## Business Impacts:

We developed definitive, roundabout design solutions that helped the client in rolling out vast networks consistently. Techwave has created a positive business impact that leveraged a long term collaboration with consistent work. The client collaborated with Techwave as we understand their network architecture and applications due to our long-term engagement on Plan & Design Services.

Our profound data inputs and field designs facilitated the client in rolling out networks for over 20,000 home passes seamlessly. Techwave's collaboration with this client enters 3<sup>rd</sup> year which reflects the efficiency of our efforts.





## Why Choose Techwave?

Techwave has been crucial in offering knowledge in specialized fields for the client's third-party apps as well as creative ways to solve business-specific demands and increase productivity, as seen in the procedures above. With our fastidious care and immense capability for field designs, we achieved the mark of 20,000 home passes. Our primary goal is to combine process models as necessary to fulfill corporate demands, restrictions, and technology solutions.



13501 Katy Fwy Suite 1000,

Houston, TX 77079, USA.

Ph: +12818294831

[info@techwave.net](mailto:info@techwave.net)

